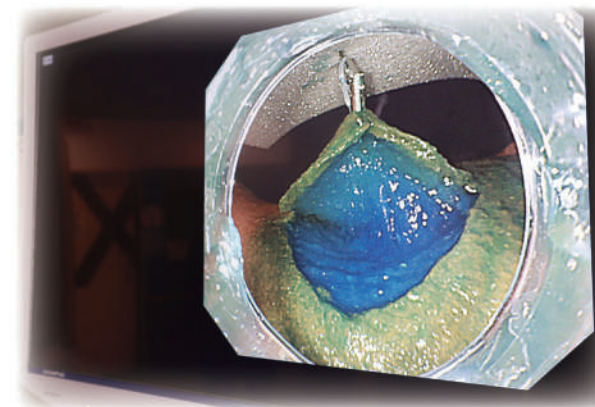


Colon Conversion Kit

for the G-Master

High-fidelity colorectal ESD training.
A long-awaited add-on for the G-Master ESD training unit.



Manufacturer:

KOTOBUKI
Medical

KOTOBUKI Medical, Inc.

Address: 4-7-3 Chuo, Yashio, Saitama 3400816, Japan
Tel: +81 (0)48-951-5211
E-mail: info2@kotobukimedical.com
Web: <https://kotobukimedical.com/>



国立がん研究センター
東病院
National Cancer Center Hospital East

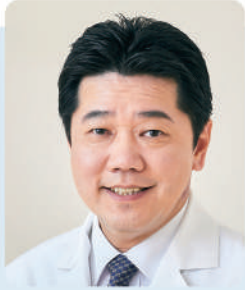


KOTOBUKI
Medical

KOTOBUKI Medical, Inc.

The G-Master is a collaborative effort between KOTOBUKI Medical, Inc. and Japan's National Cancer Center Hospital East.

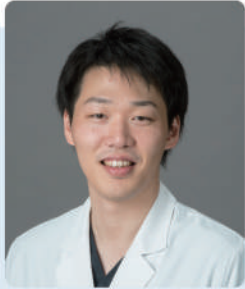
Message from the developers:



池松 弘朗
Hiroaki IKEMATSU

Head of Gastrointestinal Endoscopy at the National Cancer Center Hospital East

While the original G-Master unit was designed for ESD training in the upper GI tract, this new Colon Conversion Kit provides realistic ESD training in the lower GI tract. By turning the setting arms as desired and utilizing the power of gravity, users can create a situation similar to that of a patient changing positions. We hope this kit will be useful not only for beginners, but also for intermediate users to improve their skills with the latest devices.



砂川 弘憲
Hironori SUNAKAWA

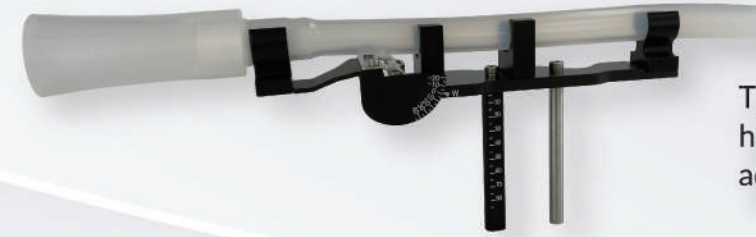
National Cancer Center
Hospital East: Gastrointestinal
Endoscopy Department



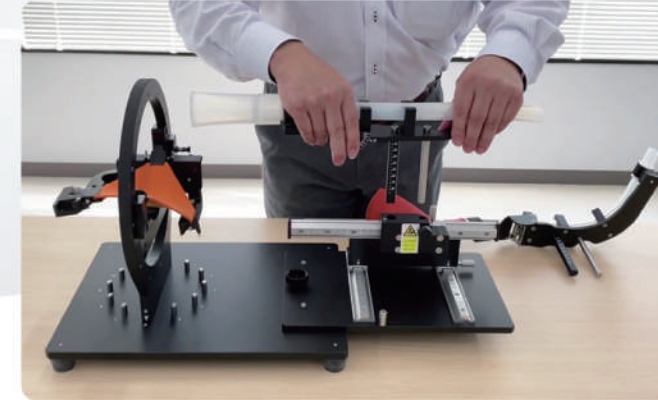
三井 智広
Tomohiro MITSUI

National Cancer Center Hospital East:
Gastrointestinal Endoscopy
Department, Saitama

There have been many requests during our visits to the United States that we provide training for colorectal ESD with the G-Master. We developed the Colon Conversion Kit as a response, as well as to accommodate the greater needs for colorectal ESD training overseas. The beauty of this kit is that it enables an efficient switch from gastric ESD to colorectal ESD simulation. Simply swap the endoscope entry port of the G-Master with the Colon Conversion Kit. We especially worked hard on ensuring that the tubular nature of the lumen could be reproduced, as a lesion could be located at any angle of the 360 degrees. We also focused on reproducing the size and tactile feedback of the tube and port for a realistic feel when the scope where it makes contact. We hope that you will make use of the colon version of the G-Master.



The ESD training G-Master unit now has a high-fidelity colorectal ESD add-on.

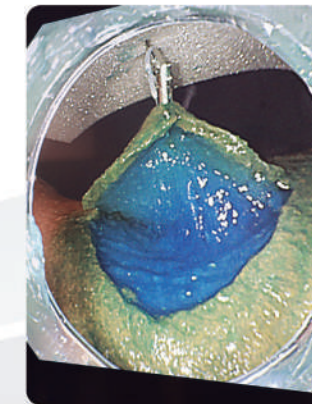
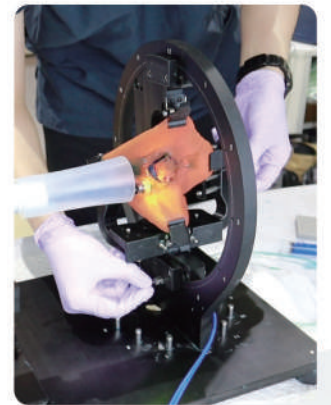
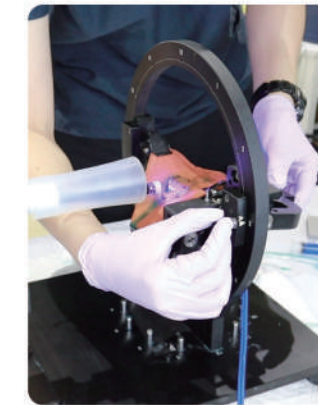


From stomach to colon in one simple step

Colorectal ESD training is as simple as replacing the gastric endoscopic port with the Colon Conversion Kit.

Simulates the use of gravity for traction

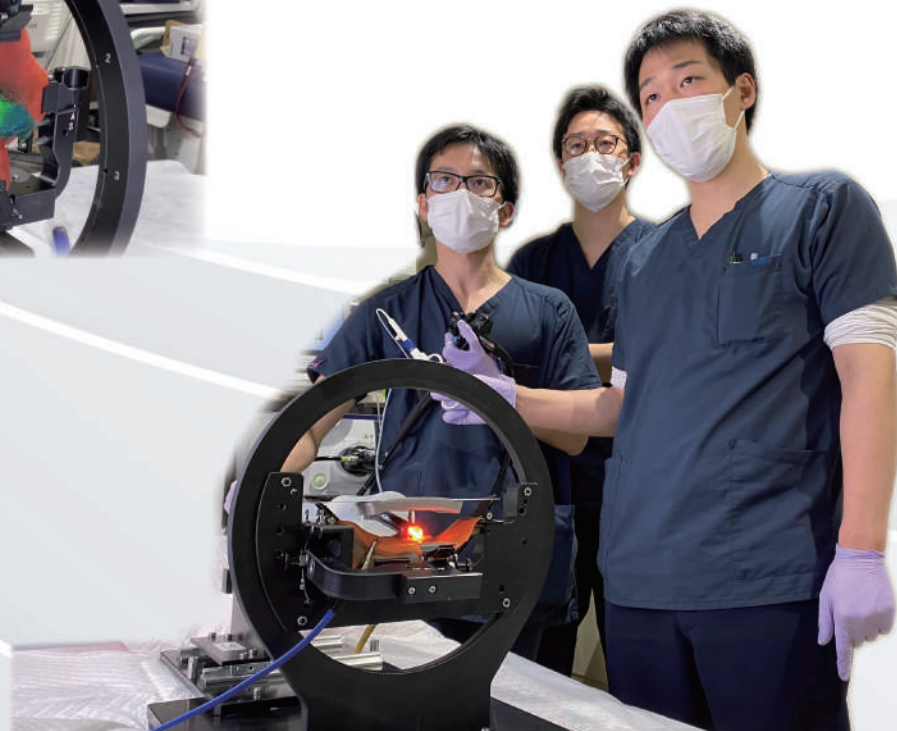
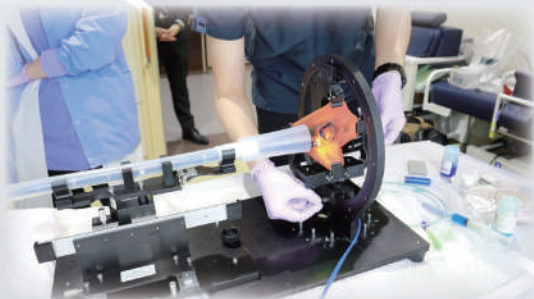
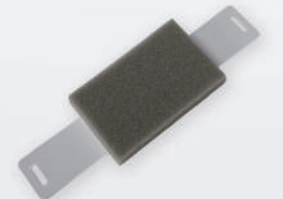
The effect of gravity on tissue tension can be reproduced by adjusting the VTT Mucosa Tissue Model's position.



Practice a variety of ESD techniques

Use the included traction sponge to practice specific techniques like clipping with counter-traction.

Traction sponge →



Product name: Colon Conversion Kit
Price: Please request a quote.
Dimensions: W35 x D5.5 x H15 cm
(Traction sponge: W15 x D4 x H1 cm)

Product No.: GM-COLON-CVKIT
Contents: Colon Conversion Kit entry port x 1
Tube strut x 1
Traction sponge x 1